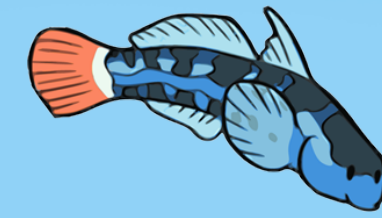




Happy Fish Trivia

Goby level



Q1 - True or False:

There are fish species that migrate from the sea into rivers to reproduce.

Q2 - True or False:

Some species in the Family Salmonidae migrate from sea to rivers to spawn.

Q3 - Which of the following is not a common name for a Salmon species?

- a. Coho
- b. Colby Jack
- c. Chinook
- d. Chum

Q4 - True or False:

Potatomodromous is a form of fish migration.

Q5 - True or False:

An island in the Caribbean shares its name with the genus of migratory eels?

Q6 - What makes the Dorado catfish unique during its Amazon migration?

- a. Color-changing ability
- b. Longest freshwater migration globally
- c. Migration without eating
- d. Nighttime migration only

Q7 - Which of the following devices are used to assist fishes over human-made obstacles on their migration?

- a. Salmon canon
- b. Sturgeon elevator
- c. Eel ladder
- d. Trout spout

Q8: - True or False:

Roads can prohibit migratory fish movements.

Q9 - Which of the following countries do not have a Salmon migration?

- a. Scotland
- b. Canada
- c. Norway
- d. Switzerland

Q10 - Salmon are known to use their _____ to help in their migrations.

- a. Scales
- b. Livers
- c. Noses
- d. Ears



Happy Fish Trivia

Shad level



Q1 - Which aquatic mammal slows river flows and provides shelter for migratory fishes?

- a. Muskrat
- b. Otter
- c. Beaver
- d. Capybara

Q2 - Which of the following fishes are anadromous?

- a. River Goby
- b. American Eel
- c. Sea Lamprey
- d. Lake Sturgeon

Q3 - How far do adult European Eels migrate?

- a. 500-1000 km
- b. 1000-5000km
- c. 5000-10000 km
- d. 10000-15000km

Q4 - Name the geographic location where adult European Eels spawn.

----- (write in your answer)

Q5 - Adult Sea Lampreys can have 11-12 rows of teeth, but what is missing from their mouths?

----- (write in your answer)

Q6 - Which of the following natural events coincide with many fish migrations?

- a. Flooding
- b. Earthquakes
- c. Cyclones
- d. Tornadoes

Q7 - What is the maximum height some salmon can jump over obstacles and waterfalls?

- a. 6 feet/1,8 m
- b. 9 feet/2,7 m
- c. 12 feet/3,7 m
- d. 15 feet/4,6 m

Q8: - Which of the following nation(s) have Amphidromous Gobies? Pick all that apply.

- a. Papua New Guinea
- b. Australia
- c. Fiji
- d. USA

Q9 - Which form of migration is anadromy?

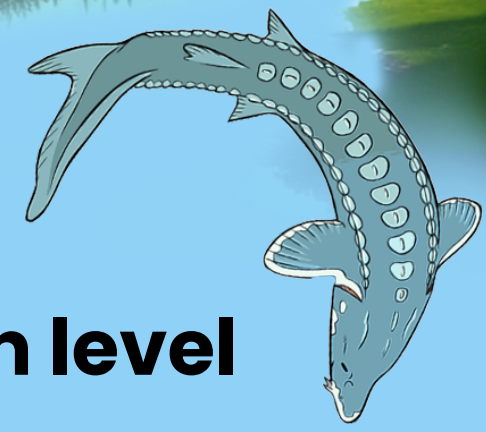
- a. Fish are born in freshwater, then migrate to the ocean as juveniles.
- b. Fish are born in saltwater, then migrate into freshwater as juveniles.
- c. Fish are born in freshwater, then drift into the ocean as larvae.
- d. Fish are born in freshwater habitats, then migrate to other freshwater habitats.

Q10 - Which is the largest fish migration on the planet?

- a. Daily migration of fish in the deep-scattering layer
- b. Yearly migration of Eels
- c. Yearly migration of Salmon
- d. Seasonal migration of Tuna

Happy Fish Trivia

Sturgeon level



Q1 - Which Catadromous fish meat was first synthesized in January 2024?

- a. Barramundi
- b. Eel
- c. Jungle Perch
- d. Tarpon

Q2 - What's a key reason for the endangered status of Piracanjuba (*Brycon orbignyanus*)?

- a. Limited adaptation to water T° changes
- b. Overfishing and ecosystem degradation
- c. Predation by invasive species
- d. Genetic diversity deficiency

Q3 - Which species is South Africa's most threatened migratory river fish?

- a. Clanwilliam Crabbyfish
- b. Clanwilliam Redfin
- c. Clanwilliam Yellowfish
- d. Clanwilliam Sandfish

Q4 - In a study assessing the 12 million river kilometres mapped globally, what percent were found to be free flowing in 2019?

- a. 17%
- b. 47%
- c. 27%
- d. 37%

Q5 - In the same 2019 study, what were found to be the leading contributors to the loss of river connectivity?

----- (write in your answer)

Q6 - Which migratory fish order is the oldest lineage of Northern Hemisphere bony fishes?

- a. Salmoniformes
- b. Anguilliformes
- c. Clupeiformes
- d. Acipenseriformes (e.g. Shad)

Q7 - Which fish species is considered a 'first fish,' signalling the beginning of harvests for several North American tribes?

- a. Pacific Lamprey
- b. Sea Lamprey
- c. River Lamprey
- d. Chestnut Lamprey

Q8: - How far (in miles or kilometres) have Pacific Lamprey been observed migrating from the Bering Sea to the Columbia River?

----- (write in your answer)

Q9 - Which fish species of the Southern Hemisphere is one of the most widely distributed freshwater fishes in the world?

- a. Common Galaxias
- b. Australian bass
- c. Rainbow trout
- d. Common Galonfish

Q10 - What important role do Diadromous fish play in many freshwater ecosystems?

- a. They are year-round predators of smaller freshwater fish.
- b. They stir up sediment and create turbidity in their freshwater habitats.
- c. They transport nutrients to freshwater systems from the ocean.
- d. They greatly reduce the food available in freshwater systems.